



Erosion & Sediment Control

CATCH BASIN LOGS

#CBW8009

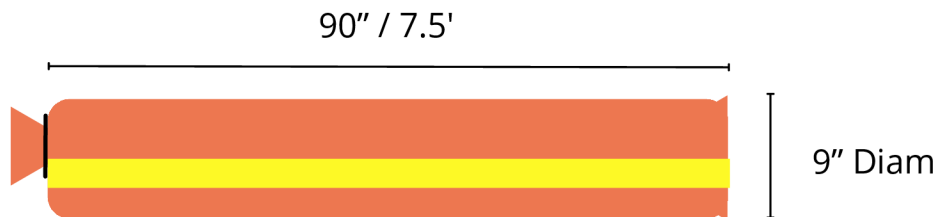
SPECIFICATION SHEET

Product Summary

Drain inlet protection assists in the prevention of coarse sediment from entering the underground storm pipe system prior to the permanent stabilization of disturbed areas as in construction sites, or on the street after winter sanding. This is accomplished by using a sediment filter and trap around the storm drain. The device slows the runoff velocity, filters the runoff, and aids in sedimentation prior to the runoff entering the drain inlet.

Description

This work shall consist of furnishing, installing, maintaining, and removing Catch Basin Socks as directed by authorized site personnel or as shown on the contract drawings. Catch Basin Socks are manufactured by BMP Supplies Inc. The BMP Supplies Inc catch basin sock –Part #**CBW8009**– is a bright orange and yellow flexible fabric tube filled with clean, kiln dried, weed and bark free wood shavings. The tube has a flap attached that serves as the anchor for the dam to the grate or road surface.



Contact Details

bmpsupplies.com
sales@bmpsupplies.com
1.855.422.0066

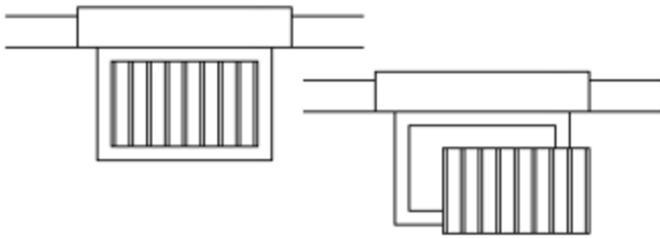
The information contained herein is furnished without charge or obligation and the recipient assumes all responsibility for its use. Because conditions of use and handling may vary and are beyond our control, we make no representation about, and are not responsible or liable for the accuracy and reliability of said information or the performance of any product. Any specification, property or application listed herein are provided as information only and in no way modify, amend, enlarge or create any warranty. Nothing contained herein is to be construed as permission or as a recommendation to infringe any patent.

CATCH BASIN LOGS

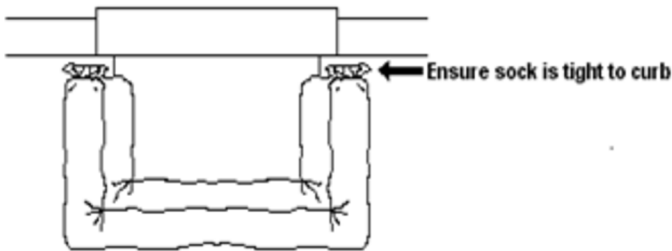
#CBW8009

SPECIFICATION SHEET

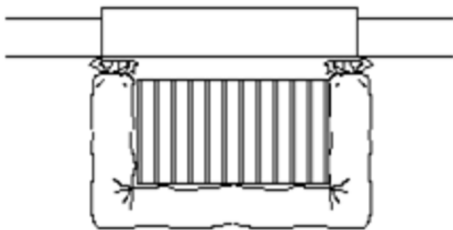
1. Remove the grate and set aside. Using a steel brush and/or scraper, clean the edge that supports the grate from dirt and gravel.



2. Lay the sock around the basin opening with the flap lying inside the opening. Ensure that the ends of the sock are pushed tight to the curb.



3. Replace the grate again ensuring the ends of the sock are tight to the curb.



Maintenance

Check the device regularly to ensure the product is not flattened by vehicle traffic. The height of the sock can be increased again by shaking the sock to separate the wood shavings.

Canadian Patent #2,414,270 - United States Patent #7,070,691

The information contained herein is furnished without charge or obligation and the recipient assumes all responsibility for its use. Because conditions of use and handling may vary and are beyond our control, we make no representation about, and are not responsible or liable for the accuracy and reliability of said information or the performance of any product. Any specification, property or application listed herein are provided as information only and in no way modify, amend, enlarge or create any warranty. Nothing contained herein is to be construed as permission or as a recommendation to infringe any patent.